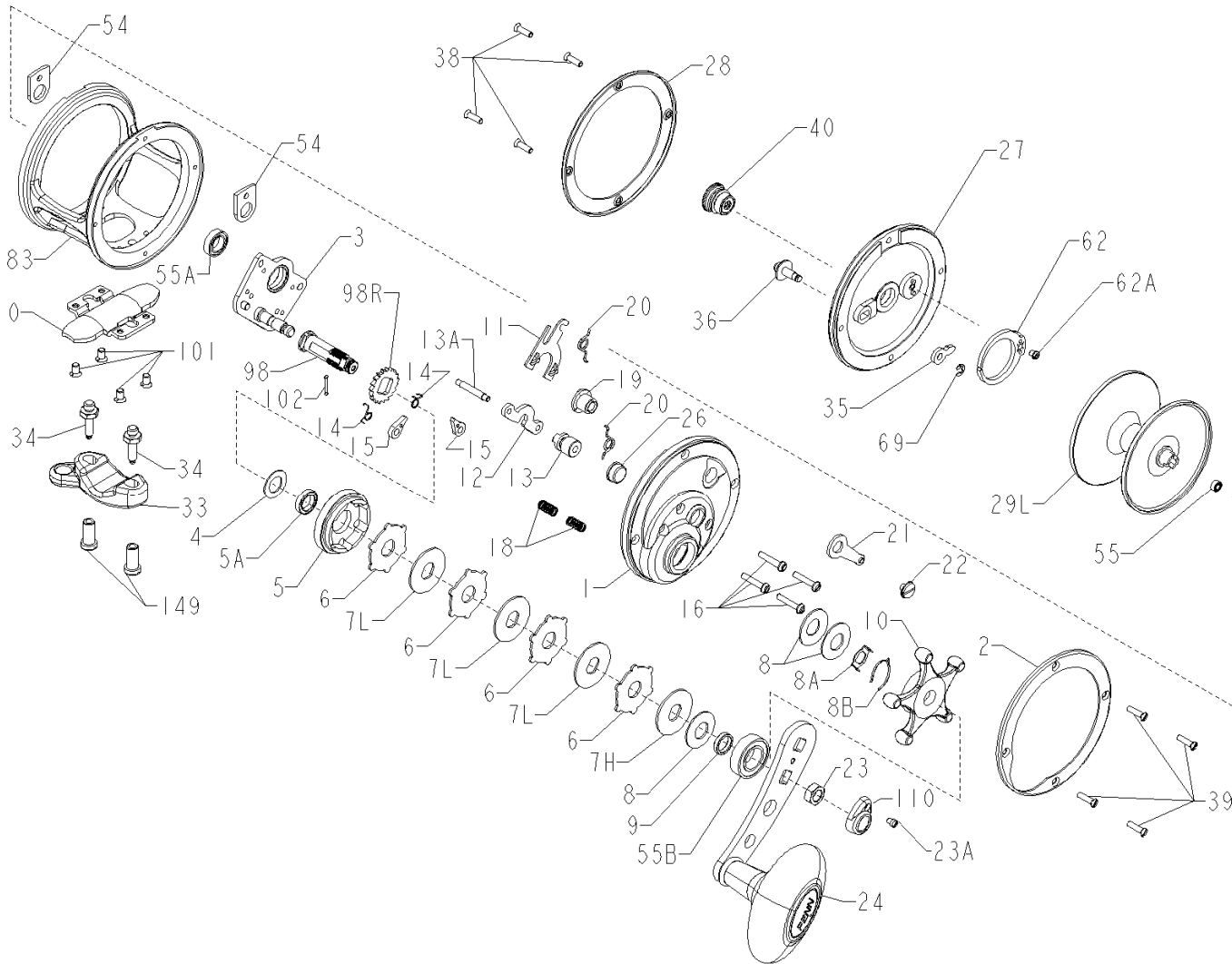




PARTS LIST FOR MODEL 113HN



<u>KEY NO.</u>	<u>DESCRIPTION</u>	<u>PART NO.</u>
1	Right Side Plate	001 113HN
2	Right Side Ring	002 113HNO
3	Bridge w/Sleeve	003 113HN
4	Fiber Washer	004 155
5	Main Gear	005 113HNSS
5A	Main Gear Bearing	055 113HN
6	Drag Washer (4 req.)	006 525MAG
7L	Metal Drag Washer (3 req.)	007 113HN

<u>KEY NO.</u>	<u>DESCRIPTION</u>	<u>PART NO.</u>
7H	Metal Drag Washer	086 049H
8	Tension Spring (3 req.)	018 505
8A	Click Washer	008 113HN
8B	Detent Spring	010C113HN
9	Spacing Sleeve	009 113HN
10	Star Drag Wheel	010 300T
11	Eccentric Jack	011 113
12	Pinion Yoke	012 113HN
13	Pinion	013 113HNSS
13A	Pinion Sub Shaft	013A113HN
14	Dog Spring (2 req.)	014 015KG
15	Dog (2 req.)	015 113HN
16	Lower Bridge Screw (4 req.)	016 113HN
18	Clutch Spring (2 req.)	018 060
19	Eccentric	019 113HN
20	Eccentric Spring (2 req.)	020 267
21	Eccentric Lever	021 113HN
22	Eccentric Screw	022 060CH
23	Handle Screw	023 555
23A	Handle Lock Screw	032 015
24	Handle Assembly	024S113HN
26	R.S. Bearing	026 113HN
27	Left Side Plate	027 113HN
28	Left Side Ring	028 113HNO
29L	Spool	029L113HN
30	Stand	030 012LT
33	Rod Clamp	033 113
34	Clamp Screw (2 req.) (Standard)	034 975
*	*Clamp Screw (2 req.) (Optional)	*034 113HN
35	Click Tongue	035 060
36	Click Button	036 113
38	Left Side Plate Screw (4 req.)	032 017
39	Right Side Plate Screw (4 req.)	039 003
40	L.S. Bearing Assembly	040 113HL
54	Harness Lug (2 req.)	054 113HN
55	Bearing	055 910
55A	Bearing	026A2.5FR
55B	Bearing	055 012H
62	Click Spring	062 309
62A	Click Spring Screw	063 209
69	Retaining Ring	069B600
98	Gear Sleeve	098 113HN
98R	Antireverse Ratchet	098R113HN
101	Stand Screw (4 req.)	101 080ST
102	Gear Sleeve Pin	102 060
110	Handle Nut Cap	110A555
149	Rod Clamp Nut (2 req.) (Standard)	149 045
	Rod Clamp Nut (2 req.) (Optional)	149 113HN
183	Frame	183 113HN
	* Not Shown	