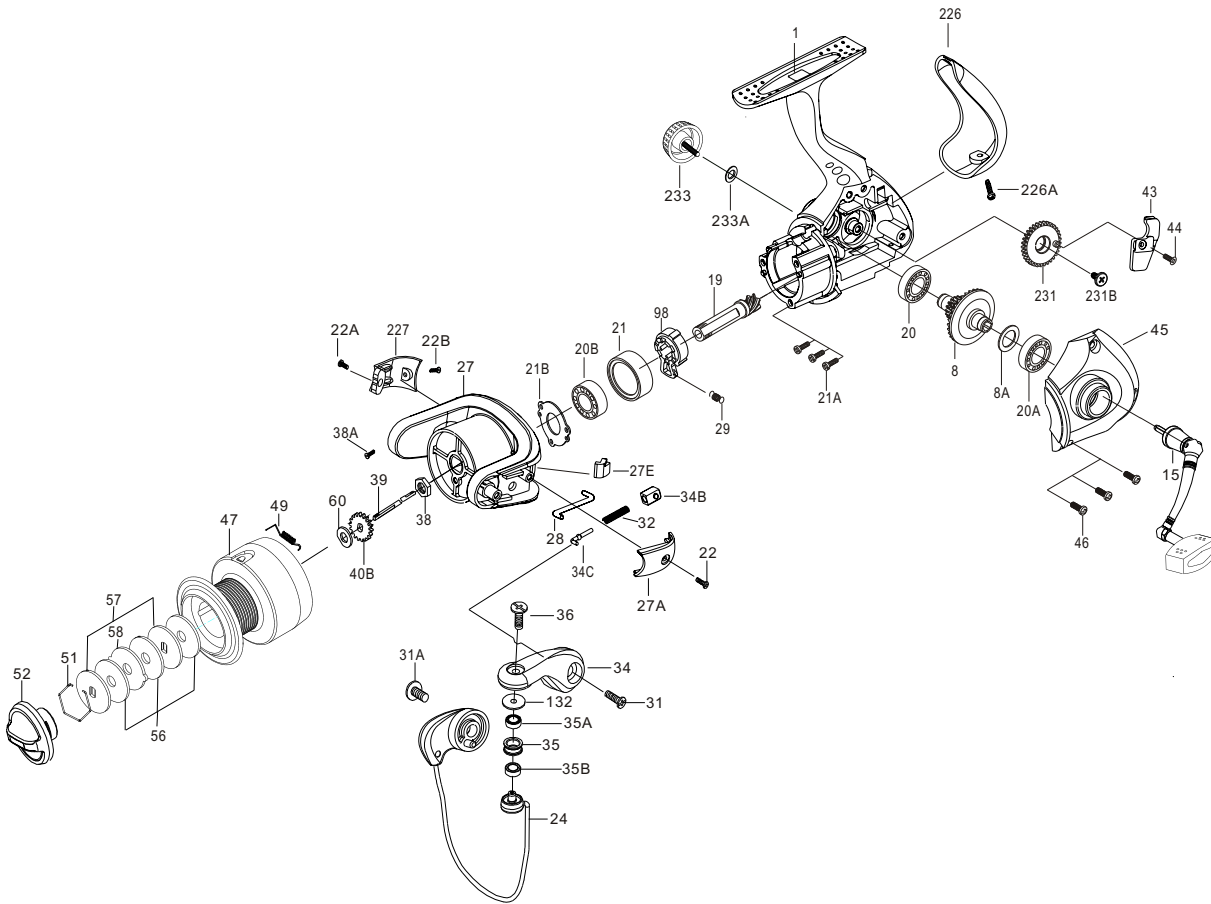




# PARTS LIST FOR MODEL SV2000



## KEY

NO. DESCRIPTION

|      |                                |
|------|--------------------------------|
| 1    | HOUSING                        |
| 8    | Main Gear Assembly             |
| 8A   | Main Gear Shim                 |
| 15   | Handle Assembly                |
| 19   | Pinion Gear                    |
| 20   | Housing Ball Bearing           |
| 20A  | Housing Cover Ball Bearing     |
| 20B  | Pinion Ball Bearing            |
| 21   | Collar                         |
| 21A  | Bearing Mounting Screw(3 req.) |
| 21B  | Ball Bearing Fixed Washer      |
| 22   | Bail Arm Cover Screw           |
| 22A  | Side Cover Screw               |
| 22B  | Side Cover Screw               |
| 24   | Bail Wire                      |
| 27   | Rotor Cup                      |
| 27A  | Bail Pivot Cover               |
| 27E  | Balance Weight                 |
| 28   | Trip Lever                     |
| 29   | Spring                         |
| 31   | Bail Arm Screw                 |
| 31A  | Bail Wire Screw                |
| 32   | Bail Spring                    |
| 34   | Bail Arm                       |
| 34B  | Pivot Guide                    |
| 34C  | Pivot Arm                      |
| 35   | Line Roller                    |
| 35A  | Line Roller Ball Bearing       |
| 35B  | Line Roller Bushing            |
| 36   | Bail Stud Screw                |
| 38   | Rotor Nut                      |
| 38A  | Rotor Nut Screw                |
| 39   | Spool Shaft                    |
| 40B  | Click Ratchet                  |
| 43   | Crosswind Block                |
| 44   | Crosswind Block Screw          |
| 45   | Housing Cover                  |
| 46   | Housing Cover Screw(3 req.)    |
| 47   | Spool Assembly                 |
| 49   | Spool Click Spring             |
| 51   | Retaining Ring                 |
| 52   | Drag Knob                      |
| 56   | Friction Drag Washer(3req.)    |
| 57   | Keyed Washer(2 req.)           |
| 58   | Drag Washer Earred             |
| 60   | Thrust Washer                  |
| 98   | Clutch Retainer                |
| 132  | Roller Washer                  |
| 226  | Rear Cap                       |
| 226A | Rear Cap Screw                 |
| 227  | Cam Cover                      |
| 231  | Crosswind Gear                 |
| 231B | Crosswind Gear Screw           |
| 233  | Bearing Cover                  |
| 233A | Bearing Cover Washer           |

## PART

NO.

|            |        |
|------------|--------|
| 001        | 2000SV |
| 008        | 2000SV |
| 008A       | 500CV  |
| 015        | 2000SV |
| 019        | 2000SV |
| 020        | 500CV  |
| 020A       | 500CV  |
| 020A500CV  |        |
| 021        | 2000SV |
| 021A2000SV |        |
| 021B2000SV |        |
| 022        | 2000SV |
| 022A2000SV |        |
| 022B2000SV |        |
| 024        | 2000SV |
| 027        | 2000SV |
| 027A2000SV |        |
| 027E2000SV |        |
| 028        | 2000SV |
| 029        | 2000SV |
| 031        | 2000SV |
| 031A       | 2000SV |
| 032        | 2000SV |
| 034        | 2000SV |
| 034B2000SV |        |
| 034C2000SV |        |
| 035        | 2000SV |
| 035A2000CV |        |
| 035B2000SV |        |
| 036        | 2000SV |
| 038        | 2000CV |
| 038A2000CV |        |
| 039        | 2000SV |
| 040B2000CV |        |
| 043        | 2000SV |
| 044        | 2000SV |
| 045        | 2000SV |
| 046        | 2000SV |
| 047        | 2000SV |
| 049        | 2000CV |
| 051        | 2000CV |
| 052        | 2000SV |
| 056        | 2000CV |
| 057        | 2000CV |
| 058        | 2000CV |
| 060        | 2000CV |
| 098        | 2000SV |
| 132        | 2000CV |
| 226        | 2000SV |
| 226A2000SV |        |
| 227        | 2000SV |
| 231        | 2000SV |
| 231B2000SV |        |
| 233        | 2000SV |
| 233A2000SV |        |